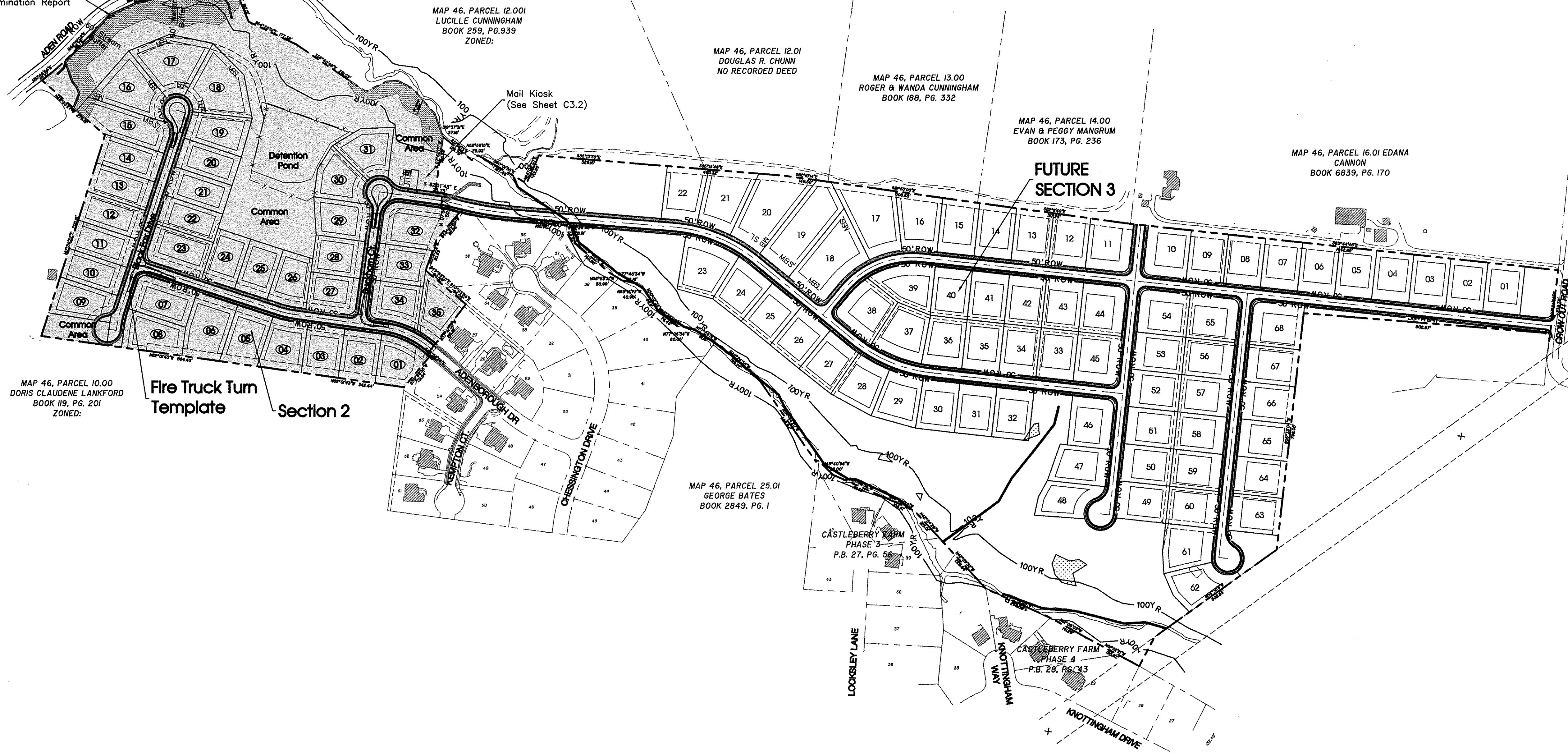


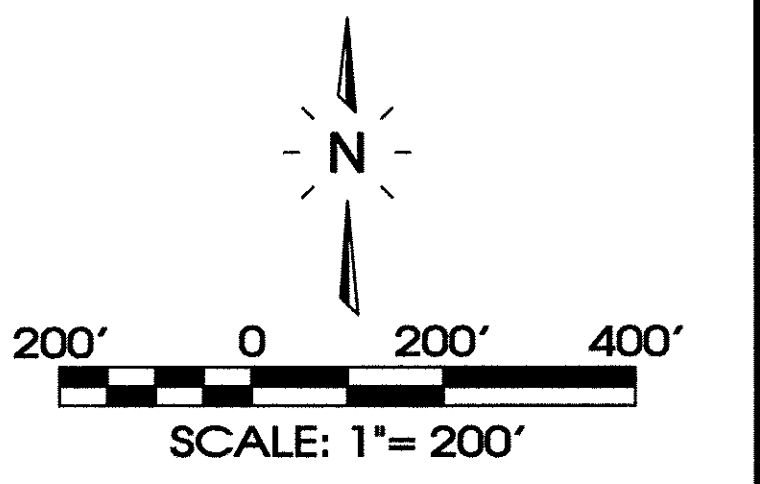
Wetland WTL-1 Per Jurisdictional Waters Determination Report
 Stream STR-2 Per Jurisdictional Waters Determination Report



Legend:

□	EXIST. CONCRETE MONUMENT	□	INLET PROTECTION FILTER
●	IRON PIN SET (I.P.S.)	⊗	HANDICAP PARKING SYMBOL
○	IRON PIN FOUND (I.P.F.)	⊕	HC SIGN
+	EXIST. SIGN POST	—	HEADWALL
○	EXIST. SEWER CLEANOUT	—	WINGED HEADWALL
○	EXIST. MANHOLE (SEWER & PHONE)	○	MANHOLE
⊖	EXIST. CATCH BASIN (STORM SEWER)	63.25 x	PROPOSED SPOT ELEVATION
⊗	EXIST. WATER/GAS VALVE	(63.25) x	EXIST. SPOT ELEVATION
⊕	EXIST. TELEPHONE RISER	⊕	POST INDICATOR VALVE
⊕	EXIST. GAS RISER	▽	REDUCER
⊕	ELECTRICAL ENCLOSURE	⊕	REMOTE FIRE DEPT. CONNECTION
⊕	EXIST. WATER METER	⊕	REVISION NUMBER
○	EXIST. UTILITY POLE	⊕	RIP RAP
⊕	EXIST. FIRE HYDRANT	↗	RUNOFF FLOW ARROW
⊕	BENCHMARK	↗	SEWER/STORM FLOW DIRECTION
⊕	BLOW OFF VALVE	↗	TRAFFIC ARROW
•	CONCRETE BOLLARD	↗	TURN LANE ARROWS
⊕	CATCH BASIN	V.A.	VAN ACCESSIBLE HANDICAP DESIGNATION
⊕	CURB INLET	⊕	WATER METER
⊕	AREA DRAIN	⊕	WHEEL STOP
⊕	CONCRETE THRUST BLOCK	⊕	GREASE TRAP
⊕	DOUBLE DETECTOR CHECK VALVE	#1	DRAINAGE STRUCTURE DESIGNATION
⊕	FIRE DEPT. CONNECTION	A	DRAINAGE PIPE DESIGNATION
⊕	FIRE HYDRANT	⊕	CONCRETE SIDEWALK
⊕	GAS METER	⊕	EXTRUDED CURB
⊕	GATE VALVE & BOX	⊕	CURB & GUTTER
○	EXTERIOR CLEANOUT	⊕	CONCRETE SWALE
⊕	CHECK VALVE		

EXISTING PHONE	PH
EXISTING ELECTRIC	OH
PROPERTY LINE	---
EASEMENTS	---
RIGHT OF WAY	ROW
EROSION CONTROL SILT FENCE	SF SF SF
EXISTING TREELINE	~ ~ ~
EXISTING FENCELINE	X X X X
MINIMUM BUILDING SETBACK LINE	---
PHASE BOUNDARY	---
EXISTING GAS LINE	GAS
PROPOSED GAS LINE	GAS
EXISTING STORM	STM STM
PROPOSED STORM	STM STM
EXISTING CONTOUR LINES	60
PROPOSED CONTOUR LINES	601
EXISTING SANITARY SEWER	SS SS
PROPOSED SANITARY SEWER	SS SS
EXISTING WATER	W W
PROPOSED WATER	W W



WADC
 WADC Representative _____ Date _____

SITE ENGINEERING CONSULTANTS
 ENGINEERING • SURVEYING • LAND PLANNING
 LANDSCAPE ARCHITECTURE
SEC, Inc.
 850 MIDDLE TENNESSEE BOULEVARD
 MURFREESBORO, TENNESSEE 37129
 PHONE: (615) 890-7901 EMAIL: MTAYLOR@SEC-CIVIL.COM FAX: (615) 895-2567
 NO PORTION OF THIS DRAWING MAY BE REPRODUCED OR TRANSMITTED IN ANY FORM OR BY ANY MEANS, ELECTRONIC OR MECHANICAL, WITHOUT PERMISSION IN WRITING FROM SEC, INC. © 2020

Aden Woods Section 2
 Fairview, Tennessee

REVISIONS:
 1-8-2021: Staff Comments #1
 2-25-2021: Staff Comments #2
 4-27-2021: Eng. Review

DRAWN: CFB3, SJA
 DATE: 12-4-2020
 CHECKED: MAT
 FILE NAME: 2005AdenWoods2
 SCALE: 1"=200'
 JOB NO. 20058
 SHEET: C0.2

Master Plan